



GAN Smart Timer Instruction

Specifications

Name	GAN Smart Timer	Size	265x48x25mm
Weight	About 118g	Battery	4 AAA batteries

Features

1. **Store & Analyze** solves without limit. The GAN timer can be connected to the Cube Station App where unlimited numbers of results can be uploaded and stored for further analysis.
2. **Signal Light Reminder**. When both hands are on touch pads, the blue signal light will be on and the timer is ready to time.
3. **Anti mis-trigger function**. All buttons will be disabled when timing & 1 second after timing finishes to prevent mis-triggering.
4. **High quality buttons**. Sensitive and durable, buttons can withstand about 100,000 times normal pressing*.

* Lab testing data, actual lifespan is subject to actual use of the product.

How to use

Step I. Connecting to App*

*It is necessary to connect the timer to the Cube Station App if you want to store and analyze unlimited solves. Connecting to the App is not necessary for the timing function.

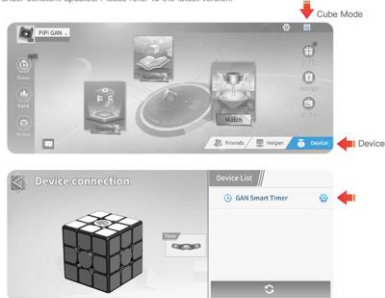
01 / Downloading

Download the 'Cube Station' via the QR code at the end of the page.

02 / Connecting

Turn on the timer and the Bluetooth of your smart phone. Select 'Smart Cube' or 'Regular Cube' in 'Cube mode' and 'GAN Smart Timer' in 'Device'. The timer is successfully connected when the Bluetooth icon in the display screen stops blinking and remains on.

*The App is under constant updates. Please refer to the latest version.



03 / Disconnecting & Reconnecting

To disconnect: hold 'Reset' for 3s.
To reconnect: turn off the timer and start from step 02.

04 / Link & Remove

After connecting the timer to the App, you can link an exclusive ID.
Press 'Switch' and hold for 3s if you want to remove it.

02 / Saving/ Checking/ Deleting data

① In Cube Station App

Results will be automatically saved after connecting the timer to the Cube Station App. You can check and delete them in the App. (Main page - Timer - Group Data)



*The App is under constant updates. Please refer to the latest version.

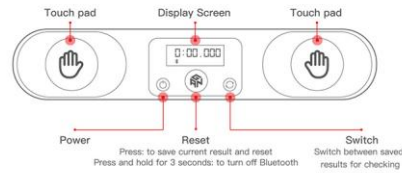
② In the Timer

Recent 5 results and the AO5 result will be automatically saved. Press 'Switch' to check the latest result, repeat pressing can review recent 5 results and the AO5 result. Results will be cleared after turning off the timer.

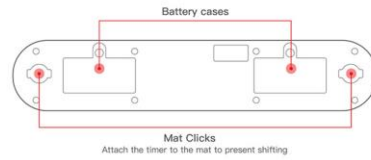


Product Appearance

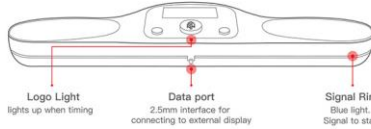
Front



Back

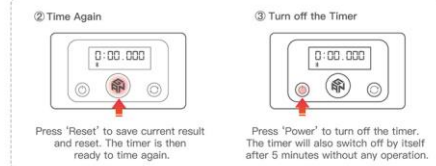
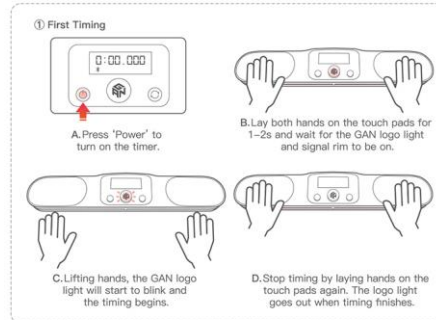


Side



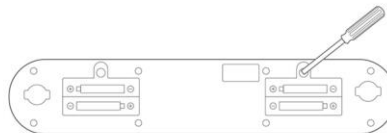
Step II. Usage of Timer

01 / Start Timing



Battery Replacing

1.5V AAA batteries are applicable. Batteries must be installed per directions instructed. The touch pads must not be touched during installing the battery.



Battery Safety

1. Use 1.5V AAA alkaline batteries only.
2. DO NOT mix old and new batteries or different batteries.
3. Drained batteries must be removed from the timer.
4. DO NOT connect the timer to power devices over DC 3.0V.
5. When battery is low, the timer screen flashes for 5 seconds, then shuts down automatically.



Download Cube Station App
Record and analyze your results



Scan and visit us.
Experience more fun of speedcubing!